



# *POWER 68*

*DESIGNED BY*

GREGORY C. MARSHALL  
NAVAL ARCHITECT LTD.





 KANTER  
YACHTS

# *POWER 68*

*DESIGNED BY*

GREGORY C. MARSHALL  
NAVAL ARCHITECT LTD.





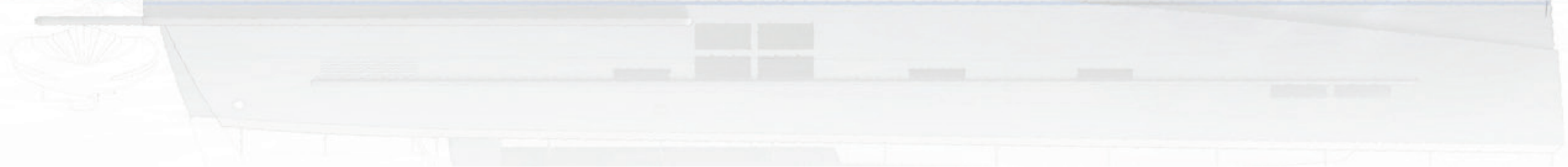
# KANTER POWER 68

## KEY FEATURES

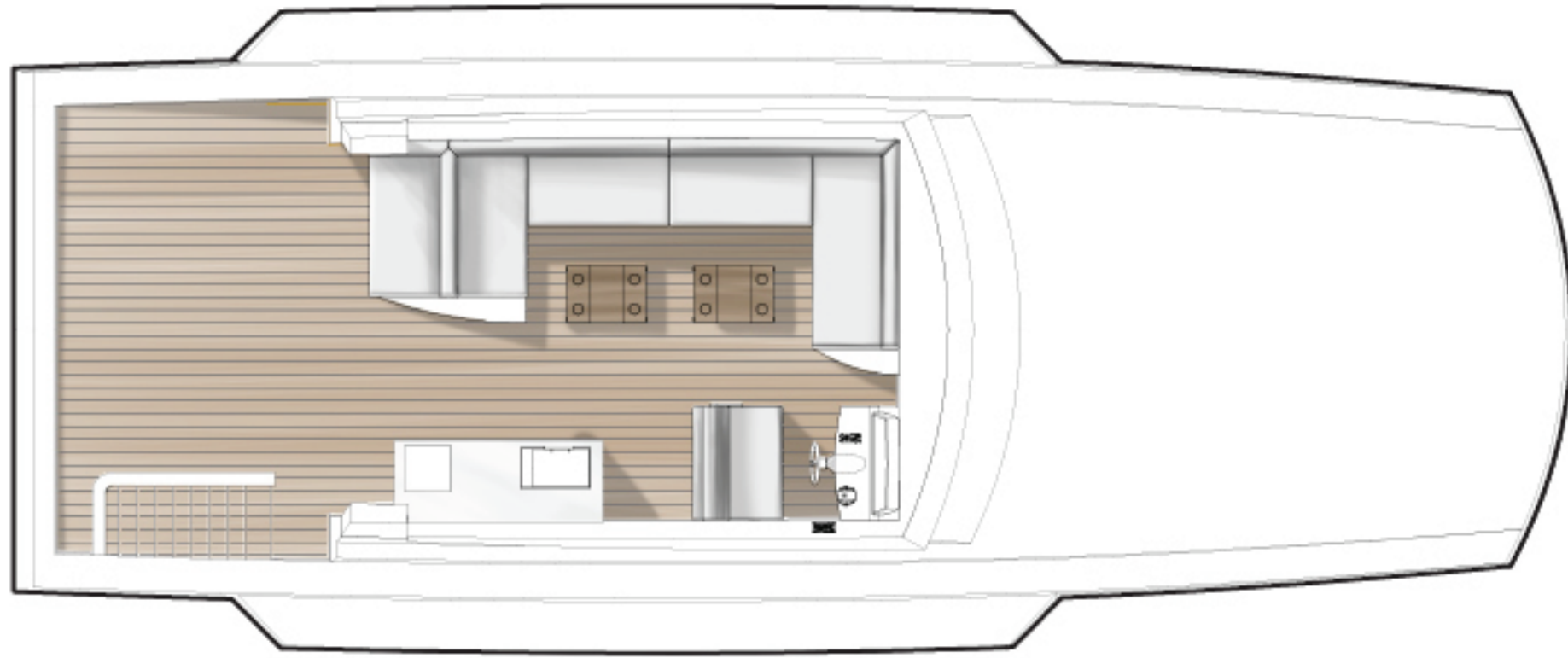
DESIGNED AND BUILT TO BE  
SIMPLE, LUXURIOUS AND RUGGED  
EASILY OPERATED WITHOUT CREW



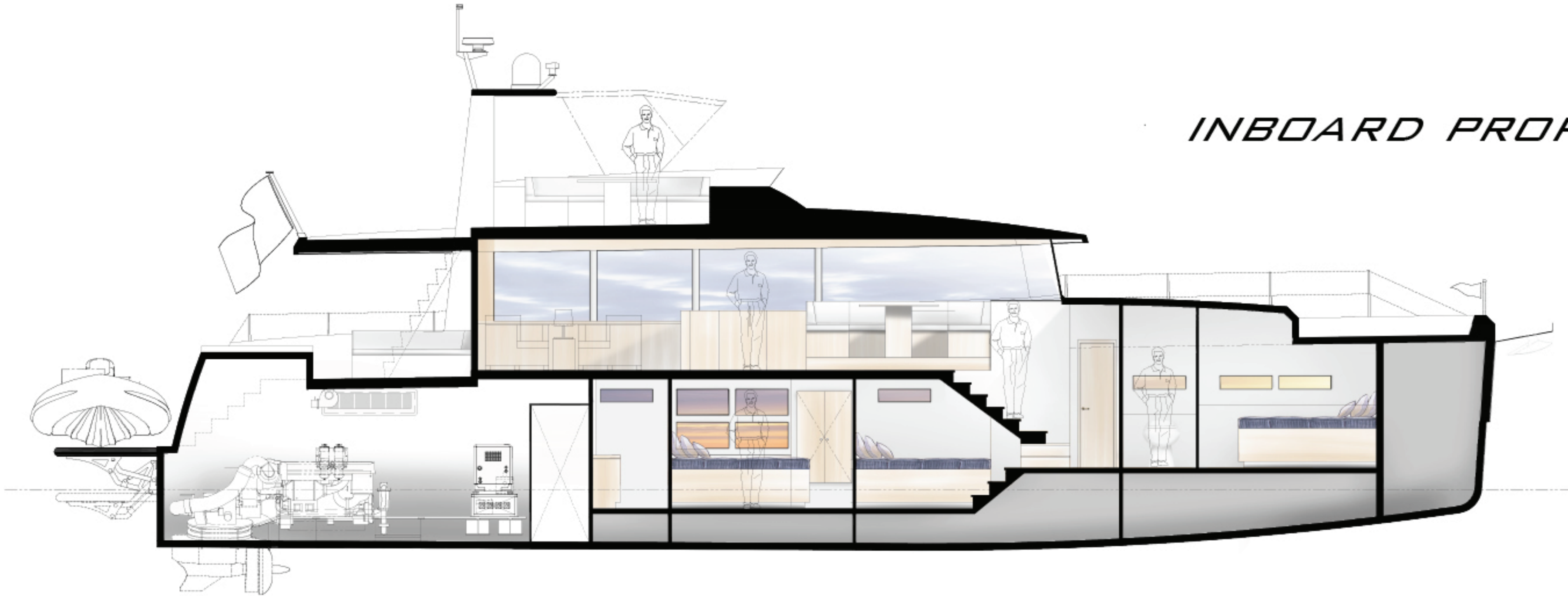
- ALL ALUMINUM CONSTRUCTION  
STRONG AND RUGGED  
DESIGNED TO LLOYDS REGISTER CLASS
- JOY STICK CONTROL  
MAKING ALL THE DIFFICULT DOCKING/ANCHORING AND MANEUVERING SIMPLE
- 360 DEGREES VISIBILITY  
LARGE WINDOWS AROUND MAIN DECK
- STARBOARD SIDE DOOR  
EASY ACCESS FROM HELM FOR ANCHORING AND MOORING
- LARGE ENTERTAINING AREAS  
BOTH ON THE MAIN DECK AFT  
AS WELL AS FLYBRIDGE
- SMALL GENERATOR/LARGE BATTERY BANK  
MAKE FOR QUIET ANCHORAGES
- SWIM PLATFORM  
ANOTHER EASY WAY TO LAUNCH THE TENDER  
AND VERSATILE PLATFORM FOR PLAYING IN THE WATER
- LOW MAINTENANCE DECKS  
ESTHEC © DECKING IN ANY COLOR AND PATTERN  
SIMPLE NON-SKID IN WORKING AREAS
- SPEED & AGILITY = VERSATILITY  
30 KNOTS WHEN YOU HAVE TO GO  
OR CRUISE ALONG AT YOUR OWN PACE 10 KNOTS







*SUNDECK*



*INBOARD PROFILE*



*MAINDECK*



*HULLDECK*





*GALLEY AFT MAINDECK*



*ALTERNATE HULLDECK*



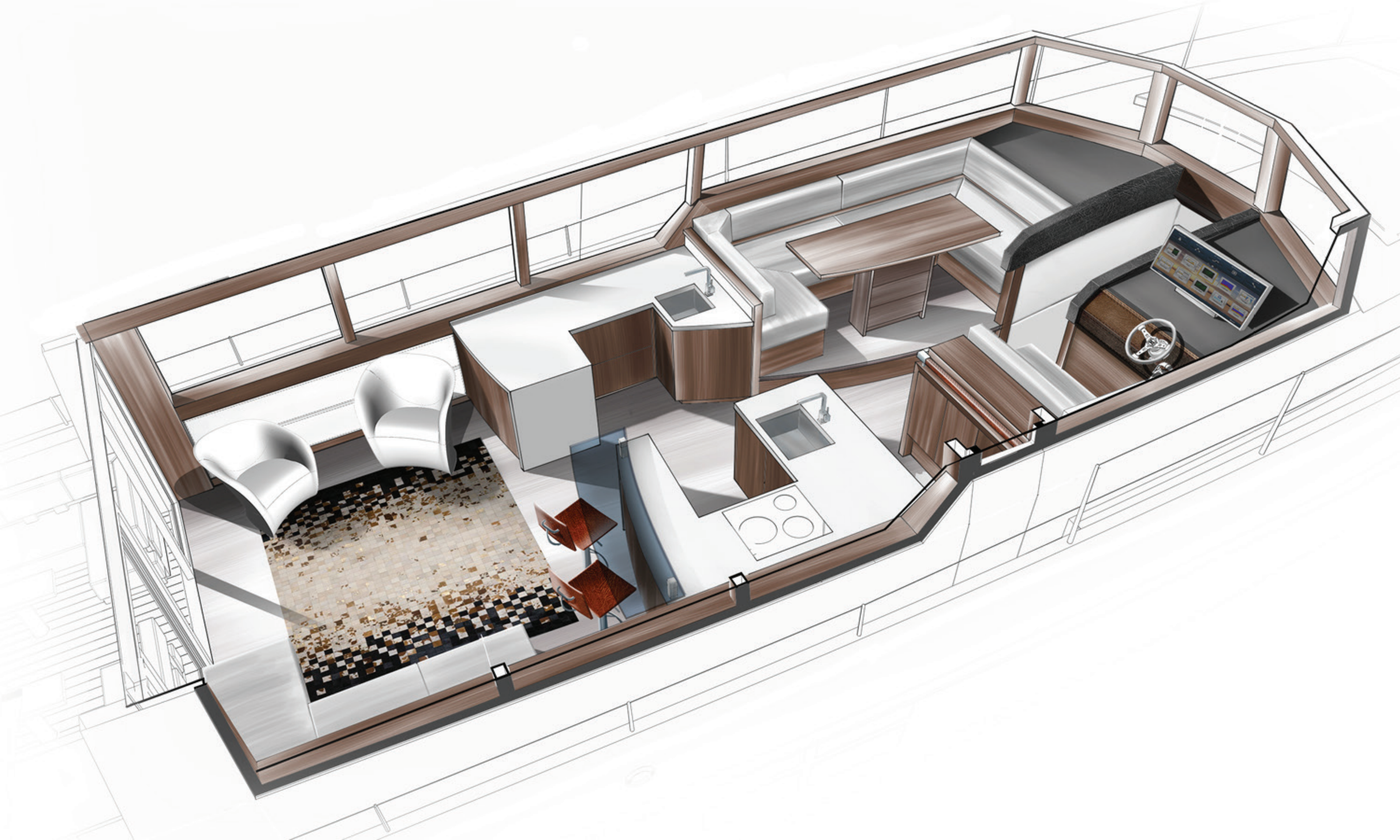












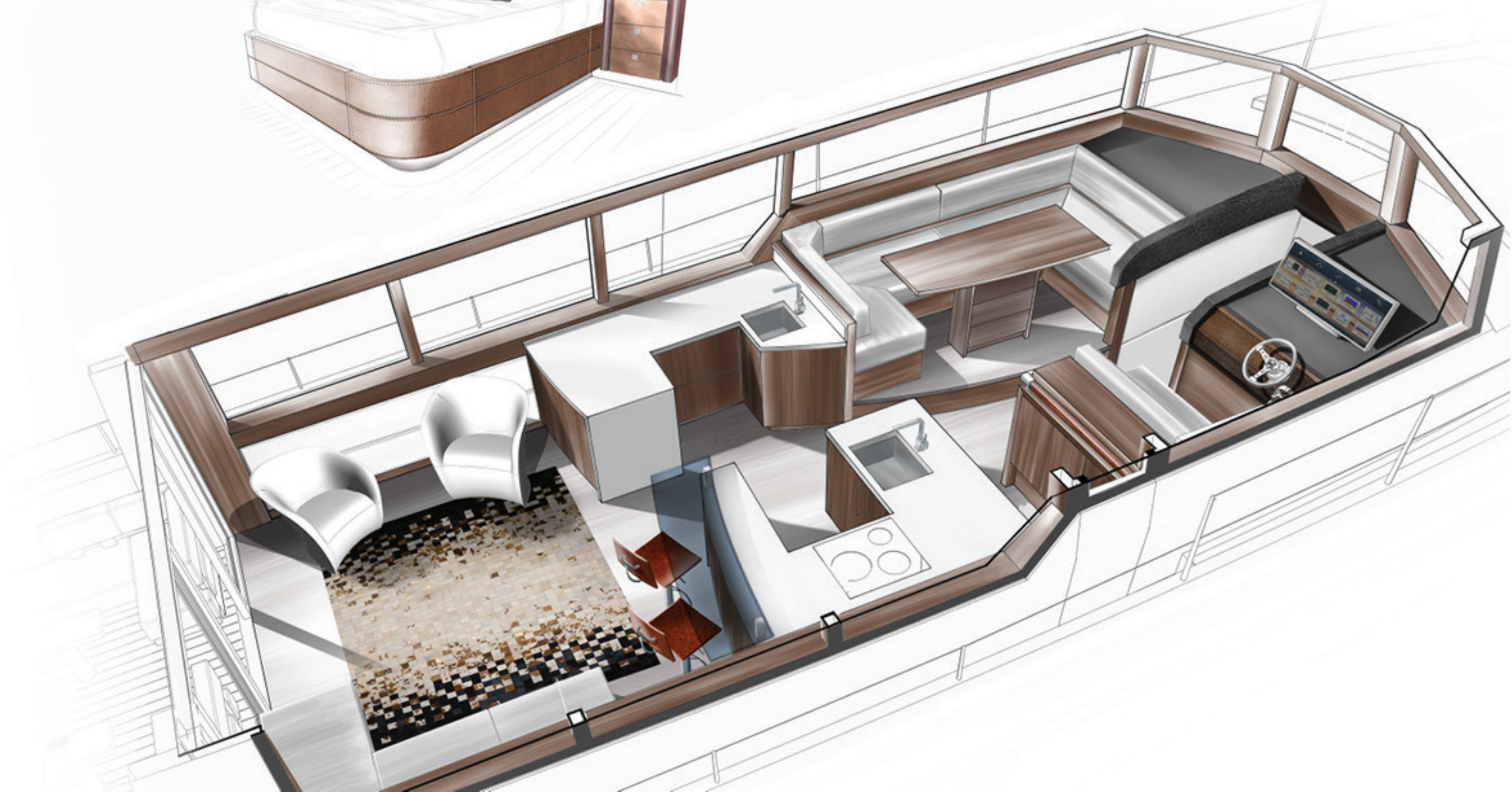
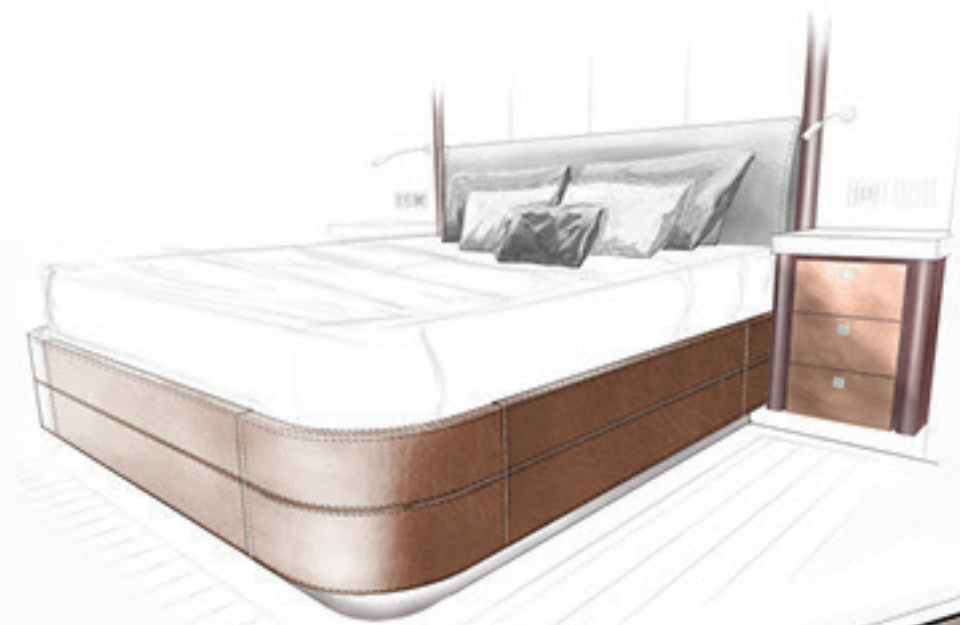
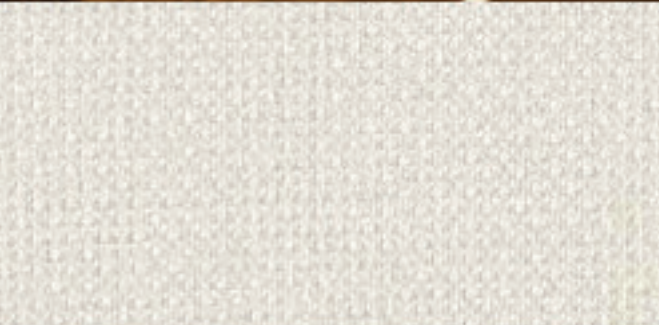






# *INTERIOR*

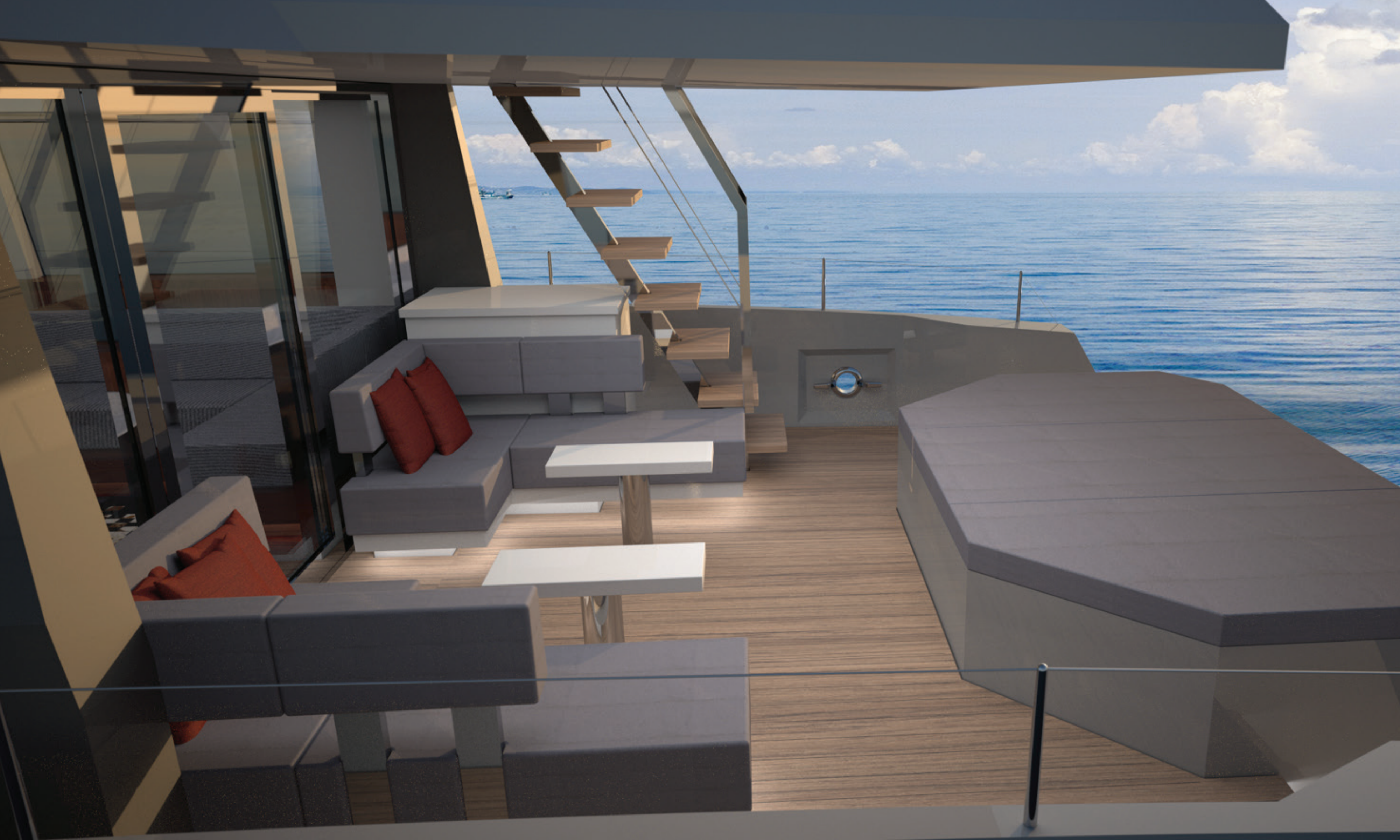
MODERN, LUXURIOUS











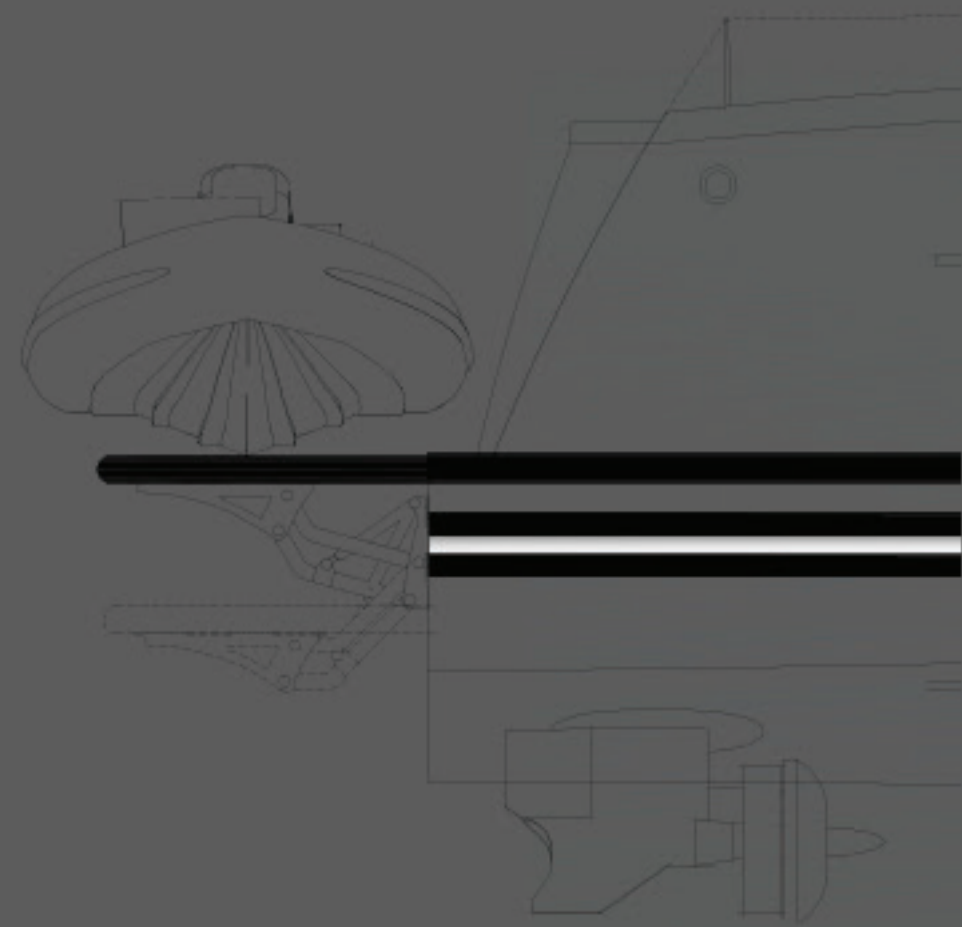






# SWIM PLATFORM

ANOTHER EASY WAY TO LAUNCH THE TENDER AND  
VERSATILE PLATFORM FOR PLAYING IN THE WATER





# PRINCIPLE PARTICULARS:

LOA.....22.75M (74'-8")  
LOD.....20.35M (66'-9")  
LWL.....20.15M (66'-1")  
BMAX.....5.35M (17'-6")  
DRAFT.....1.60M (5'-3")  
DISPLACEMENT.....36 TONNES  
DD CAPACITY.....3000 L  
FW CAPACITY.....800 L  
BW CAPACITY.....500 L  
SPEED MAX.....30 KNOTS  
SPEED CRUISE.....25 KNOTS  
PROPULSION.....X2 IPS-1200  
POWER.....X2 VOLVO D13900HP



KANTER MARINE  
9 BARRIE BOULEVARD  
ST. THOMAS, ONTARIO CANADA  
N5P 4B9

PHONE: 519.633.1058  
FACSIMILE: 519.633.8138

[WWW.KANTERMARINE.COM/](http://WWW.KANTERMARINE.COM/)

[SALES@KANTERMARINE.COM](mailto:SALES@KANTERMARINE.COM)

GREGORY C. MARSHALL  
NAVAL ARCHITECT LTD.



[WWW.GREGMARSHALDESIGN.COM](http://WWW.GREGMARSHALDESIGN.COM)

[GORD@GREGMARSHALDESIGN.COM](mailto:GORD@GREGMARSHALDESIGN.COM)

OFFICE +1 250 388 9995

MOBILE +1 250 415 8300

